

❖ LESSION 11 ❖

CREATING A VALUABLE LIFE: MASTERING YOUR GARDEN

Focal Point: *Mastery is kingship and kingship equals quality. The more quality you have the more meaning your life has, and the more meaning your life has the more valuable it is to you. That value determines your hunger, mastery and decisions. People will always be impacted by what you do and how well you do it. Therefore releasing kingship is the key to releasing destiny and real world influence.*

Required reading:

- John 15:1-17, Proverbs 6-8
- Matthew 13:24-52

Suggestive reading:

- *The Blueprint:* Chapter 6

Overview:

Mastering your garden is the key to becoming a generational influencer, torch carrier, world leader, and world changer. As we saw in our previous lesson Daniel mastered his gifts and areas of influence, and his dominance caused him to rise to power as one of the most powerful princes in Babylon.

With that said, we covered 3 main areas of cultural influence: Language, Philosophy and Values. A Kingdom culture will come to influence and invade these 3 areas with the will, intent and purposes of the king for them. In this lesson we want to take a closer look, particularly at how to leverage kingdom influence in our value systems so that we understand and acknowledge our worth to God on a daily basis. Our value determines everything—self-esteem, decisions, relationships etc.

We must tune our value system to God’s and take that same value to the marketplace, but only by opening the door to the market through the mastering of our gifts. We must master our personal sphere to impact the world’s spheres of influence. So we will build value in this lesson, creating momentum in the Kingdom by realizing your purpose and destiny through gifts, gardens and opportunity.

You are going to see how truly valuable you are and the need for you to infect the world with that value. You are responsible for a generation of people, big or small, God has called you to influence. You will discover how to master basic human kingdoms with God’s order, and leverage that order to experience total fulfillment. In doing so you will be able to pursue a higher level and quality of life as you master each system moving from need to provision and from surviving to thriving.

When you are thriving you can help someone else, but until you begin to reach a level of mastery in your personal life you aren’t going to be much help to

Blueprint University – Master’s Guide

anyone lost in the this dying cursed world system. This teaching will show you how to balance life & balance gifts, so that you can balance your garden and create massive impact, leaving your own unique mark in history that can never be erased.

LESSON 11 CURRICULUM

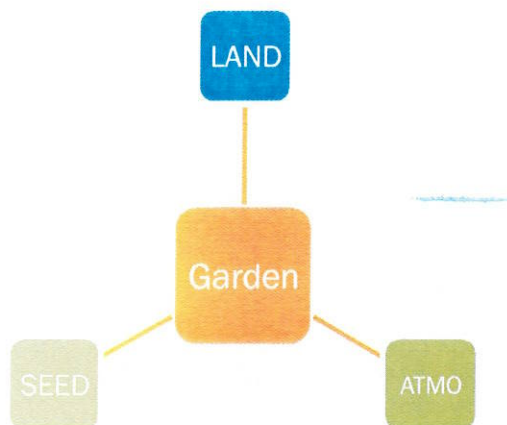
I. **Mastering Your Garden: Expanding the garden principle**

1. In lesson 2 we defined the main components to a Kingdom. In those main components was land, territory or a garden. As we talked about mastering the garden in lesson 2 and in prior lessons, we know that mastery in our own sphere is the key to influencing the earth. Let us add greater clarity to functioning in the garden and mastering your garden to produce a life that compels you to greatness.

2. **Define the elements of a Garden (territory)**

What is a garden? Territory; sphere of influence. An area or domain that can be ruled. A garden is a place where ideas are cultivated and reproduced. It is also an atmosphere created when the right things are continually spoken into the right place.

a. The main function of a Garden is reproduction. Reproduce your ideas, strategies and vision. Keep being fruitful using your sphere of influence.



3. **3 major elements of a garden:** Land, seed, & atmosphere.

1. **Land (soil)** – the place where you cultivate ideas. Soil. The heart of man is soil. Your heart, mind, will, soul. The place where ideas emerge. That’s ground/land.

2. **Seed** – what you cultivate: EX: Ideas. Philosophies.

3. **Atmosphere** – What you use to grow and how you grow it. Rain, wind, sunlight. Words, the learning process, what you think on and constantly talk about.

b. The garden is the place where one cultivates ideas

c. Every time I begin to meditate on an idea/seed, I adapt to that idea through the kingdom process (internalize, formulize, materialize) and it starts manifesting in my garden. I have to cultivate the seed after it’s planted. I have to set the atmosphere with words and things I’m saying, who I let around me, what I lend my ear to.

d. **The garden** is the territory where one develops thoughts into ideas, ideas into concepts and concepts into world changing strategies. By implementing those strategies one is able to manifest their dream in any sphere of influence in the earth and make it their reality. Strategies form an action plan.

3. **What God’s really talking about in the garden.** When you go back to land you are looking at real estate. God has promised us real estate. But not physical property. It is a spiritual blessing. Ephesians 1. However this spiritual blessing has some material goods attached. That doesn’t mean that you don’t have physical land and property. But don’t equate real estate to just physical

land, that’s not the Joshua principle of possession. It’s wherever you decide to put your foot that is the land you possess or inherit. Your spiritual domain can go anywhere you put it. It’s wherever you state your claim.

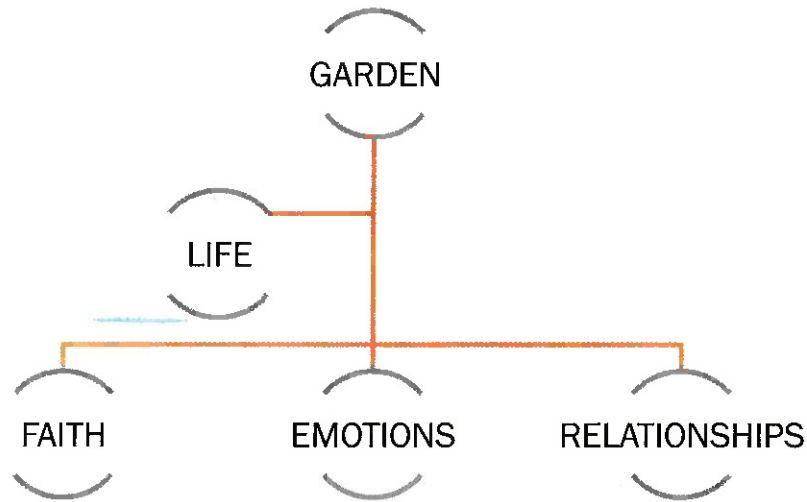
- a. Spiritual blessing with physical influence because it’s a double portion of inheritance. The #1 job and assignment of the spirit of God (mind of God – God has so many thoughts that the Holy Spirit manages his thoughts because he wants to rest) is to show us the intent and purpose of God in everything and give us clarity of those thoughts.
- b. Your inheritance is all the gifts and ideas God has given you, all the doors of opportunity that will ever open for you. You can’t create or make up gifts; you’re born with gifts. You have a set of gifts, talents, strengths, & ideas. As you cultivate them, they are your doors and your inheritance. The message of the Kingdom is: get a revelation of your divine nature and work your garden. Cultivate the land. Work your ideas. And they will manifest/materialize. That’s your allotment. You have to work it. The land is good. You must put some effort into it. Garden/land/territory/sphere of influence: all the same thing
- c. It’s about mastering your garden. Learning your gifts. Your talents. Your strengths. They’re like gardening tools. You need tools to pull out and reap the harvest.
 - i. Spiritual doesn’t mean the Blessing is only unseen. Spiritual means it can manifest anywhere you want it to.

4. MISCONCEPTION: You can’t give enough money to get money from God. Because God didn’t give you money, that’s not your inheritance, resource is.

- a. Money is a way for manifesting something. (job, wealth) It’s just a form of transaction. You will reap in dollars and cents sometimes. Because it’s a way to meet needs. Resources. Money is no more of a modus than a job is.
 - i. Money is a transaction source for resource. Money is currency, a form of transaction to produce resource. Money is not resource. It can produce or buy you resource. So spiritual laws work on the best place to manifest what you said, whether it’s through dollars and cents, someone giving, a door of opportunity, and most likely your gift. Most favorable condition/outcome.
- b. What you give you will reap worth 100 times, but you have to go to your garden. Supernatural laws flow from God’s nature. So they operate like God. They operate based on what’s best, not just what’s good. I can sow words and time and reap a harvest. I can sow financial seed and reap a harvest. But that’s not the only way I can sow seed. You can’t minimize the Word to just dollars and cents. You have to sow more than financial seed. God has to give me a tool to reap the harvest through. But if all you think about is money coming you’ll sit on your tail and not reap it.

Blueprint University – Master's Guide

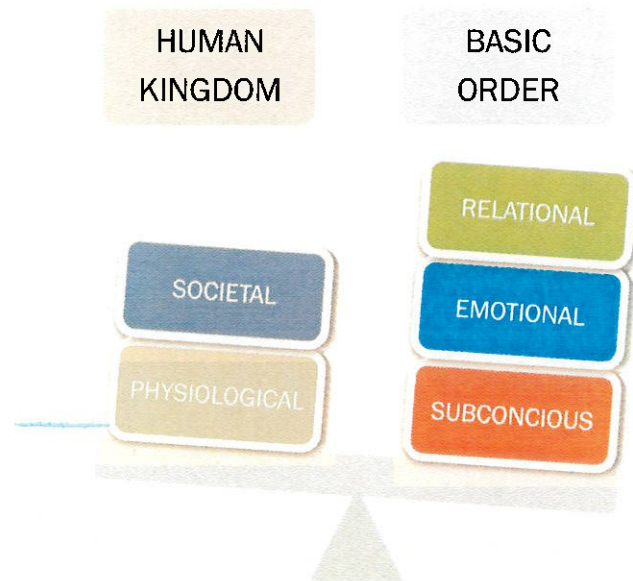
- II. **MASTER YOUR STATE:** You have to master 3 core areas of life
1. # 3 CORE AREAS OF LIFE



- a. **Master 3 core areas of life:**
- i. Faith
 1. Actualize your ability to win at anything
 - ii. Relationships
 2. Align your circle of influence with your purpose and intent
 - iii. Emotions
 3. Gain emotional balance by examining thoughts and words with the word of God.
- b. Master 5 basic Kingdoms of the human genre we need in order, so that we can “prosper” or “thrive” with excellence.
- i. Societal Kingdom:
 1. Resources, food, employment, finances, family, health
 - ii. Physiological Kingdom
 2. Food, sleep, water, exercise
 - iii. Relational Kingdom
 3. Marriage, family, friendships, professional, oppositional (enemies)
 - iv. Emotional Kingdom
 4. Confidence, need for approval, self-respect, boldness, courage
 - v. Subconscious Kingdom
 5. Decision making process, reactions, tendencies, driving factors
- c. Each Kingdom is co-existent; therefore they are relational to each other, not hierarchal. This means at any given time when one of these Kingdoms is not in order our life is missing or out of place; therefore we fail to experience its fullness as God intended.

Blueprint University – Master’s Guide

- i. **KEY:** Pray for discernment in each area and seek Kingdom principles to eradicate sorrow from each area.
- ii. Although Kingdoms function hierarchal, it is important to understand that some function relational. The Kingdom of God comes to restore order to how these areas of our lives function according to the Word. We can be the most gifted individuals in the world but our influence will fade if we only master gifts and fail to master life.



III. PERSONAL INVENTORY: 4 LEVELS OF LIVING (image on next page)

1. Life is experienced in four stages. Locate where you are and shift levels of living as you master your garden, your gifts and your life.
2. Spiritual fiscal analysis: It is important to examine where we are so that we know how far we are from where we want to be. We need to understand where we are and how far we need to go to become and accomplish what we desire. Examine this model for personal/self discovery and begin making a mental adjustment into the next phase and your life will conform to your mental change in paradigm.
3. **The key to life mastery** is order in the 5 basic human kingdoms. The way you bring balance and order to these kingdoms is by examining where you are through the 4 levels of living.
 - a. **WINE BEFORE BREAD:** Once you clarify where you are, you can begin to release faith, pray for strategy and pursue a new quadrant of living. The shift happens mentally and then physically. You must understand that God wants to “prosper your soul” before he prospers you physically. **WINE BEFORE BREAD.**
 - b. Also, you have to get beyond the survival stage in core personal life areas in order to position yourself to elevate into real excellence and dominance. You cannot dominate in life when your basic human sub-systems are out of order.

4. Core Life Quadrant: 4 levels of living:

If you can create the paradigm shift mentally from one quadrant to another, you will experience a shift physically in any area you apply this to.

(Suggestion: tell everyone to draw this picture and then explain to them what each letter means)



❖ **DIVING:** In this state there is no momentum, except in a downward or negative flow. You cannot help anyone in this area. **Example:** If financially you are diving, you cannot help anyone get financial breakthrough.

❖ **SURVIVING:** Still no momentum, barely making ends meet and cannot help anyone. *(The difference in surviving is you aren't heading down, just not going anywhere.)*

❖ **RISING:** You have begun to build momentum in a positive direction. You

are in stride to and accomplishing some of your dreams. You can help at least one or two people.

❖ **THRIVING:** You are in position to help someone do what you've done. Time and money aren't a factor. You're moving in unstoppable momentum.

➤ **THE TRANSITION HAPPENS MENTALLY. IT'S A PARADIGM SHIFT. PHYSICALLY GOD WILL TAKE YOU FROM ONE QUADARANT TO THE NEXT. EXODUS 23:29-30** *"But I will not drive them out in a single year, because the land would become desolate and the wild animals too numerous for you. Little by little I will drive them out before you, until you have increased enough to take possession of the land."*

▪ **FAITH WORKS THIS WAY.** MENTALLY SEE YOURSELF MOVING FROM DIVING TO SURVIVING, THEN RELEASE FAITH FOR STRIVING AND THEN MORE FAITH TO THRIVE. YOU CAN REMAIN CONSCIOUS OF THRIVING THE WHOLE TIME, HOWEVER ALLOW GOD TO INCREASE YOUR CAPACITY TO HANDLE SUCCESS AT EACH LEVEL, NO MATTER THE CORE AREA OF LIFE OR BASIC HUMAN KINGDOM.

▪ **An Example:** Using this model to bring order to your personal life would look like this:

- 1) **Locate:** *define where I am financially on the life quadrant. Determine where I would like to be.*
- 2) **Ask:** *When I look at my financial kingdom, am I at a dimension of no momentum (diving, surviving), some momentum (rising) or a lot of momentum (thriving)? Am I in position to help and teach someone else in this area? Am I at a level of mass influence in this area?*

Blueprint University – Master’s Guide

- 3) **Pray:** *Father, let your kingdom come and let your will manifest in my finances. I declare that I am no longer diving, but I am thriving financially. I declare Kingdom order in these financial areas.*
 - 4) **Pursue:** *Here you seek God for strategy; from sowing seed all the way to taking a capital market investment class. Seek out opportunity to walk in your words and paradigm so that you can supernaturally supersede the levels you’ve been experiencing.*
 - 5) **Repeat:** *Continue pursuing kingdom authority and systems to apply that will enrich that desired area. Set goals, take action and be accountable to remaining consistent in your pursuit of kingdom order of the basic human model.*
5. **CONFLICT: Eradicating disorder.** As you leverage the core life quadrant to bring Kingdom order to these personal areas, people of disorder and dysfunction will quickly be revealed.
- a. Order is light and disorder is darkness. The bible says that light has shown in the dark and that darkness has never understood or comprehended it (John 1). People, who seek to bring order to these areas of life, whether relationally, emotionally or financially, will always encounter persecution from those around them in disorder. Do not be unequally yoked believer with non-believer. Here the same principle applies. Believer represents one who understands Kingdom order & the unbeliever is one who does not and operates in dysfunction. As a result you cannot yoke yourself to disorder; you must walk in agreement with people of order.
 - i. As you move out disorderly people, God will bring relationships of order that will help you gain the leverage you need in your personal areas of life so that you can become a high achiever in life.
 - b. Often times, people make the mistake and relate disorder to an unclean house, or one who lives a party life or is immoral. These can all be indicators of disorder. However the main disorder God wants us to focus on is people who are out of alignment with His Kingdom agenda and mentality.
 - i. **EX:** Some people may have a clean house, but a pessimistic view on life, which is disorder. Some people may be able to budget all the way to the last penny, but refuse to give any more than what they given for 10 or 20 years, that is disorder. Expect God to adjust these people in your life who do not have Kingdom order, as you embrace His balance in the 5 main sub-kingdoms of the human class.
 - c. As you bring your garden into order, by leveraging God’s principles to master your relationships, emotions and faith, you must realize the importance of examining where you are in each area. The same goes for the 5 basic human kingdoms. God wants you to create a laser focus on where you want to go, but only by you being clear and honest about where you are. Again, as you shift internally, your world will conform to that order.

III. Master your quality II. (refer to lesson 2)

REMEMBER: **VALUE** is one of the main cultural blocks of cultural influence. It determines what we view as important, what’s important to us and the level of life we engage and experience. Here we are transforming and translating value systems so that one can experience real Kingdom impact as a cultural influence.

1. **Understand what it means to “add meaning” and add value to your life.** The true definition of prosperity is the point at which your life has the most meaning. It is also the point at which we live our most compelling lives. The Kingdom of God comes to bring quality to every human kingdom that exists to ensure one is living and experiencing their best life. Let’s look at how value is created and meaning is added—which determines the overall quality of our life.
2. This class is designed to teach you how to add value to your life using God’s principles to ensure you are functioning in the right system.
3. **The VALUE of life is the Key to prosperity.** VALUE determines all decisions. VALUE determines price, commodity, accessibility & availability.
 - a. ***Purpose + Destiny + Value + Meaning + Prosperity + Success = Total Enjoyment.** This is the intention of the gift of “LIFE.”
 - ❖ What’s the price tag on your life?
 - ❖ What do you demand life pays you?
 - ❖ Since you were born, life has been asking, “What’s your price?”
 - ❖ Don’t expect from people a value you haven’t given yourself
 - ❖ Ex. When an item is priced wrong, the retailer honors the lower price. That’s what we do. We honor the lower price because we haven’t set a higher one.
 - ❖ The price tag on your life is whatever you imagine it to be and life will pay that price if you demand it to.
4. **The Kingdom of Quality**
 - ❖ Man was created in the “image” of God= the same quality he used on himself he used for the human. DNA molecules
 - ❖ The Kingdom of Heaven is that system he invested into man to ensure we had the same pattern, design and model to build our lives with God.
 - ❖ This means we are in the God class. Man has the nature of God hidden inside of him.
 - ❖ That God nature is intended to release the same living conditions that God has. Look at:
 - ❖ **2 Peter 1:3&4-** His divine power has given us everything we need for a godly life through our knowledge of him who called us by his own glory and goodness. **4** Through these he has given us his very great and precious promises, so that through them you may participate in the divine nature, having escaped the corruption in the world caused by evil desires.
 - ❖ **Ephesians 4:4-6-** There is one body and one Spirit, just as you were called to one hope when you were called; **5** one Lord, one faith, one

Blueprint University – Master’s Guide

baptism; **6** one God and Father of all, who is over all and through all and in all.

- ❖ **Romans 8:29-** For those God foreknew he also predestined to be conformed to the image of his Son, that he might be the firstborn among many brothers and sisters.
- ❖ **Ephesians 3:16-19-** I pray that out of his glorious riches he may strengthen you with power through his Spirit in your inner being, **17** so that Christ may dwell in your hearts through faith. And I pray that you, being rooted and established in love, **18** may have power, together with all the Lord’s holy people, to grasp how wide and long and high and deep is the love of Christ, **19** and to know this love that surpasses knowledge—that you may be filled to the measure of all the fullness of God.
- ❖ **God’s will is to put YOU IN THE GOD CLASS. EVERYTHING IS TO BE SUPERIOR & QUALITY**

5. What is the quality of living (life)?

- ❖ It’s when the overall value of your life is the highest.
 - **Distinction** (character). **Uniqueness** (the real you-authentic, destiny & purpose). **Consistency** (same results, systematic living). **Superiority**. (High-level authority) Genesis 1 (multiply, increase have dominion.) The Kingdom mandate was a high quality of life. That’s what draws men to the light. You have been commanded to live with excellence & superiority so that you can influence on all levels

6. Core areas of State Mastery needed in order to produce a higher quality of living:

- a. **Emotional Mastery**
- b. **Faith Mastery**
- c. **Relationship Mastery**
- d. **Why is balancing emotions important? (Why does this matter to my overall quality of life?)**
 - ◆ Emotions can determine our state of feeling, thinking and being.
 - ◆ Emotions can end up determining how we make decisions when our spirits were intended to do that. (God doesn’t force his will so we have to become great decision makers. That begins with balancing our feelings with principles.)
 - ◆ Emotions at their pinnacle can increase your enjoyment and overall satisfaction of life.
 - ◆ Emotions can trigger certain thoughts that will eventually influence your physiological state.
 - ◆ Balancing emotions helps us make better decisions and discern better relationships.

7. **FAITH VS. EMOTION:** God wants you operating by faith because it’s a higher principle.

- Faith is Kingdom law
- Faith is a principle. It doesn’t function by feeling, or what is logical; therefore faith cannot be perceived by the senses. It is pure spiritual law, it operates above the flesh’s limited capacity, it reaches the deepest places of creation, the inner most parts of God. It’s God intention for all of mankind.

Blueprint University – Master's Guide

- Faith does what is opposite to sensory mechanism.
 - Logic- what makes sense = feeling= emotion
 - Mixing emotion with the Word of God to fit your situation or belief systems is creating your own doctrine.
 - Emotion makes you want to walk out of this truth because it pricks against your logic and reasoning.
 - The light has come but men loved darkness; John 1
 - Faith doesn't make sense (sense is an emotional experience)
 - Faith is not an emotional experience
 - Faith goes by what it sees in the spirit realm
 - Emotion goes by what it sees in the earth realm, it cannot perceive spiritual things
 - Emotions are supposed to be subject to faith, the law that governs everything in the spirit. It is the governing order of the Spirit of God.
 - Abraham was called into an unknown place, because he came into contact with the Law of faith.
 - Even though it made no sense (emotion) he could trust it because he tapped into faith and met God.
 - Emotions can only be perceived through 5 senses, but not faith.
 - Faith is higher than emotion because it's all Spirit, it's all divine/spiritual/supernatural law.
8. **EMOTIONAL MASTERY:** is functioning at your highest possible emotional intelligence (or equilibrium).
- What is emotional intelligence?
 - A self-perceived ability to identify, assess, and control the emotions of oneself, of others, and of groups
 - Avoid negative emotions, live in the good ones, but balance them with principles.
 - Don't allow good feelings to determine decisions, let your principles do the choosing
 - This is how you tap into God's wisdom and will for everything, use his advice given through practical principles applied from his constitution (Bible)
 - Principles are safe.
 - Principles are the key to living spiritually
 - Spirit = science = system = laws = principles
 - God's mind in us, his system for solving problems, producing results.
 - Principles release the spiritual provision and abundance of Heaven.
 - The bible is designed to get principles to you
 - Joshua 1 "meditate on my law (principles) all day long and you will have success and endless prosperity
 - Your life is a reflection your principles
 - What you do and believe? Those principles are either good or bad.
 - What you believe is your principle, whether good or bad

Blueprint University – Master’s Guide

- You know how this works? You have created endless negative cycles by using bad (earth cursed) sayings and philosophies. The key is to create new patterns and cycles based on God’s philosophy and insight.
- Renewing your mind is taking in the consideration of God’s perspective in every situation. His mind for your minds. His belief system for yours. Just because you believe in God doesn’t mean you have the same belief system as him.
- God can alter your life with 1 philosophy.
- God doesn’t operate based on emotion primarily. He doesn’t do things just to get a feeling out of you, he wants you to understand his principles.
- Principles build pathways. “Your word is lamp to my feet and a light to my pathway. Light = the Kingdom light = the Kingdom principles that govern that light. He gives them to you to choose your path
- Power of will and decision-making. You must choose. God gives good information but we must choose.

9. Truths about God and emotion:

- Emotion will not move God, only faith does
- Principle or law moves God, he designed himself that way
- Faith is the highest governing principle in the Kingdom of Heaven and in the entire universe
- God is not designed to make decisions based on emotion, he is a spirit, that is systematic conscious living
- God can experience every human emotion known to man
- He created emotions to intensify the living experiences, with good emotions
- God will never abort principle for emotion
- God created the world based on principles not emotion
- God designed man based on principles not emotion

10. EMOTIONS & RELATIONSHIPS (decision-making)

- ❖ *How do you ensure that you are not making decisions out of your emotions?*
- Develop principles from God’s Word and live in them
 - Principles are 1) fundamental truth. 2) A rule or law concerning a natural phenomenon or the behavior of a system. 3) System of set rules with invariable functions when applied to the same conditions (results are always the same, based on proven facts. If it’s not proven, it’s just a theory. Proven= fact= principle.) 4) Guidelines for conduct, value systems and morals.
 - Principles operate from within a science. Science is the knowledge of something or a system. When you understand a system you have to have the principles and know what they are and how they function.
 - You cannot live in the Kingdom dimension without those principles that govern the reality of God’s world.
- Always ask “what matters most,” first.
- Connect with people based on principle
- Choose your circle of influence based on like minds, dreams and visions

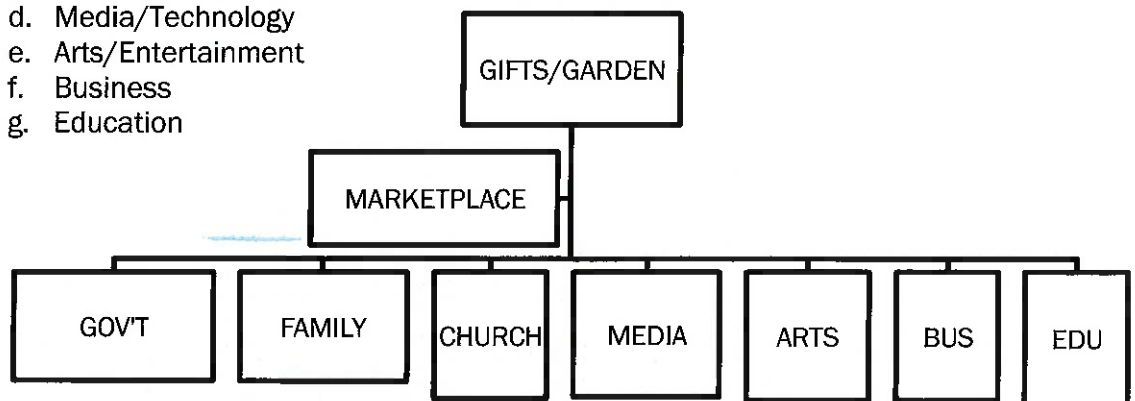
Blueprint University – Master’s Guide

- You are the sum total of who's around you, don't be emotional about who you invest the most time with, spend it wisely.
- Then develop your perception & interpretation of the matter from that perspective; what matters most right now?
- Once you answer that question, make a decision based on that principle and you will have the same results every time.
- If you don't manage emotion people will take advantage of you. They will play on your emotions to produce a feeling in you to get a reaction. That is manipulation.
- However, you can combat that by sticking to your principles.
- An example is people who come and go, invest nothing and want access to your life. Once you've spent the time building your spiritual city & unifying your soul with God's intentions, don't let anyone interrupt that.
- Don't let anyone disrupt your flow of positive emotions and progression into God's purpose. If you don't manage emotion that will happen.
- You are a spiritual being first. That means principles & concepts over everything else; the science of how things operate. Based on science and principles we decide.

IV. Master Your Gifts II: Leveraging gifts to build value

1. **Meaning and value:** It all comes down to discovery of destiny and purpose. Gifts are clues and tools that help us recognize our identity, purpose and areas of influence.
2. **MARKETPLACE Spheres of influence:**

- a. Government
- b. Family
- c. Church/Religion
- d. Media/Technology
- e. Arts/Entertainment
- f. Business
- g. Education



3. Examine the spheres of influence and determine: *what spheres do your gifts fall into?*
 - a. **Active influence.** What are you doing to bring your gifts to the marketplace to leverage massive influence in each sphere?
 - b. Who are you currently impacting with your gifts (Major & Minor)?
 - c. **Modern day kings.** Name some modern day kings or individuals who have achieved and are currently functioning in mastery and dominance in your marketplace sphere and personal sphere (gifts)

Blueprint University – Master’s Guide

- d. **Generational influence.** Do you realize through your gift there is a whole generation of people that God has designated for you specifically to influence and positively impact with His Kingdom purpose? That is part of your allotment.
 - e. **Gifts give allotments and territories.** Mastering gifts is a vital and essential element to releasing your inheritance and estate in the Kingdom of God.
4. **RESPONSIBILITY:** Answer the call
- a. **You have a *Kaleo*, a calling.** The bible talks much about our present calling or appointment.
 - b. **You have an allotment, territory, a body and generation of people** you are called to impact with your gift for God’s Kingdom purpose.
 - c. **In that allotment is your estate or sphere of influence,** which is God’s main reason for placing you here, influence the earth (your sphere of the earth) with his Kingdom culture, through gifts, talent, lifestyle, etc.
 - d. **Realize your value** as heavenly representatives and ambassadors who have been assigned to have generational influence by mastering your territory or land. Your garden must be worked but in time will beautify by your persistence, consistency and understanding of your worth to God, and his desire for you to locate and fulfill your calling and assignment.
 - e. **This is how you gain meaning and add value.** Continue in this process and course of action and your value will only increase. This means your levels of success and prosperity will keep going higher; the point at which you experience the most success. This is how you go from diving to thriving and living life above every limit at it’s highest quality. This is living authentic. The Kingdom of God comes to give you an authentic life through God’s value system.
 - f. **KING’S DIMENSION:** Do not forget that mastery is kingship. In each basic human kingdom you should be operating in kingship or mastery. In each core life area you should experience a level of dominance, which is kingship again.
 - i. **Leverage the life quadrant to master core areas of life** so that you can rise to reign in every human kingdom and genre of life. Master your gifts to accelerate your destiny by locating your sphere of influence and intended purpose and assignment.
 - ii. **This will lead to fulfillment,** overall kingship aims to increase your quality of life, income bracket and overall fulfillment and enjoyment of life.
 - iii. **Kingship means quality and quality means fulfillment.** The purpose of your kingship is to gain the most meaningful and fulfilling life possible.